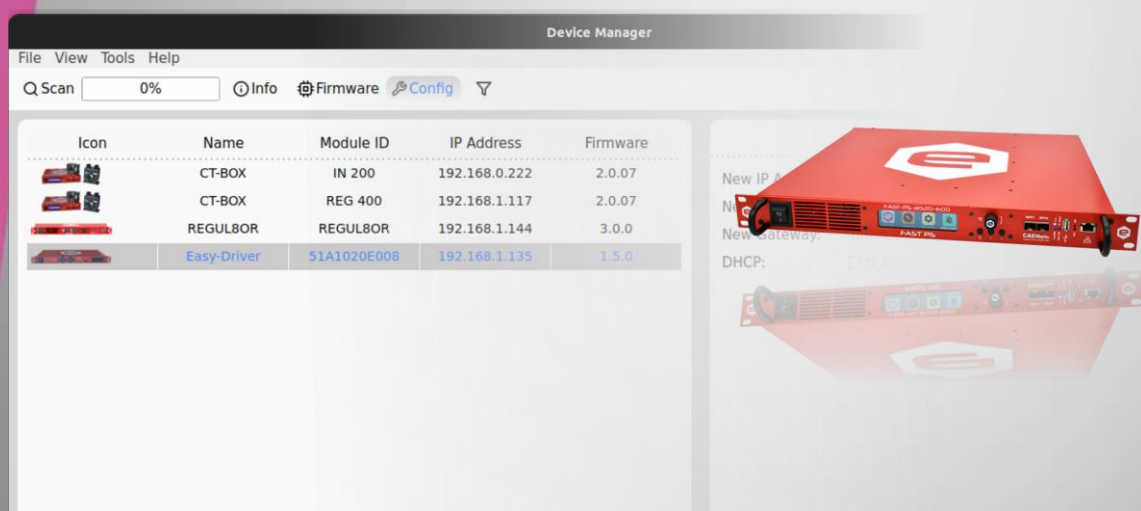


# DEVICE MANAGER



## Quick Start Guide

All Rights Reserved  
© CAEN ELS s.r.l.  
1.0 – August 2023

 **CAEN ELS s.r.l.**  
c/o AREA Science Park  
S.S. 14 km 163,5 – 34149 Basovizza (TS)  
Italy  
Mail: [info@caenels.com](mailto:info@caenels.com)  
Web: [www.caenels.com](http://www.caenels.com)

*For technical assistance please refer to the following contact:*

**CAEN ELS S.R.L.**  
SS14, km 163,5  
34149 Basovizza (TS) – Italy  
(c/o Area Science Park – Building Q1)  
Phone: +39 040 375 6610  
Fax: +39 040 375 6611

**Purpose of this Quick Start Guide**

This document is the Quick Start Guide of the Device Manager software.

**Disclaimer**

No part of this quick start guide may be reproduced in any form or by any means, electronic, mechanical, recording, or otherwise, without the prior written permission of CAEN ELS s.r.l.

CAEN ELS declines all responsibility for damages or injuries caused by an improper use of the Quick Start Guide due to negligence on behalf of the User. It is strongly recommended to read thoroughly both the CAEN ELS User's Manual and the Application Notes before any kind of operation. CAEN ELS reserves the right to change partially or entirely the contents of this Manual at any time and without giving any notice.

# Table Of Contents

- 1. INTRODUCTION..... 6
- 2. GUIDE.. 7
  - 2.1 INFO PAGE ..... 7
  - 2.2 FIRMWARE PAGE..... 8
  - 2.3 CONFIG PAGE..... 10
  - 2.4 FILTER ..... 11
  - 2.5 TOOLS..... 11
    - 2.5.1 *Select Network Interfaces* ..... 11
    - 2.5.2 *Settings*..... 12

# Document Revisions

Revision	Date	Comment
1.0	August 10 <sup>th</sup> 2023	First Release



# 1. Introduction

This document is the Quick Start Guide for the CAENels Device Manager software, used to detect CAENels devices that are connected on the same network, update their firmware and change the device network settings. Supported CAENels device-families are reported in **Tab. 1.1**.

Supported CAENels device families
CDCU
Easy-Driver
FAST-PS
FAST-PS-M
FAST-PS+
FAST-PS-1K5
FAST-Bi-1K5
HPPS
NGPS
QDS
Regul8OR
AMC-PICO-8US+
EnBOX
PreDAC
TetraAMM
CT-BOX

**Tab. 1.1:** List of the CAENels device families supported by Device Manager software.

## 2. Guide

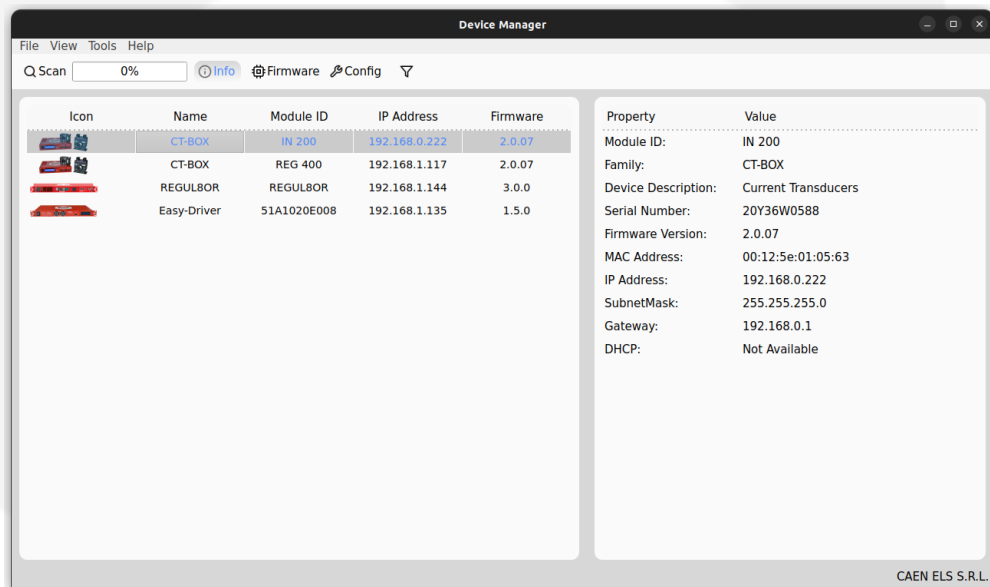
The main body of the Device Manager windows is basically organized in two tabs:

- The left one is showing the list of the detected CAENels devices that are connected on the same network, together with their basic information.
- The content of the second one depends on the icon [*Info (Sec.2.1)*, *Firmware (Sec.2.2)*, *Config (Sec.2.3)*] that has been selected from the horizontal upper bar.

At the startup, both tabs are empty and the *Info* symbol is automatically selected. By means of the *Scan* icon on the upper bar, the research of CAENels devices on the network starts and the detected devices are shown on the left tab with their basic information. Alternatively, the Scan functionality is available at the File-> Scan menu.

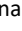

### 2.1 Info Page

As previously mentioned, the *Info Page* is shown as an empty-page on the right tab at the startup of the Device Manger software. Once a Scan has been completed and a specific device is selected, the additional information are shown on the corresponding tab.

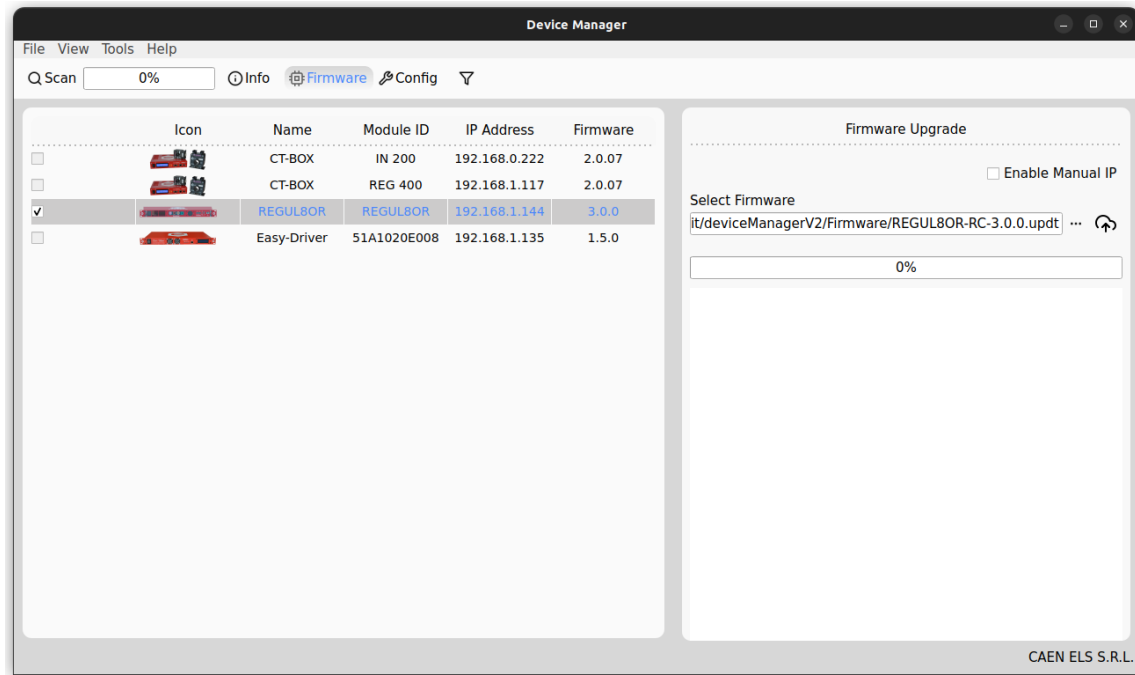


## 2.2 Firmware Page

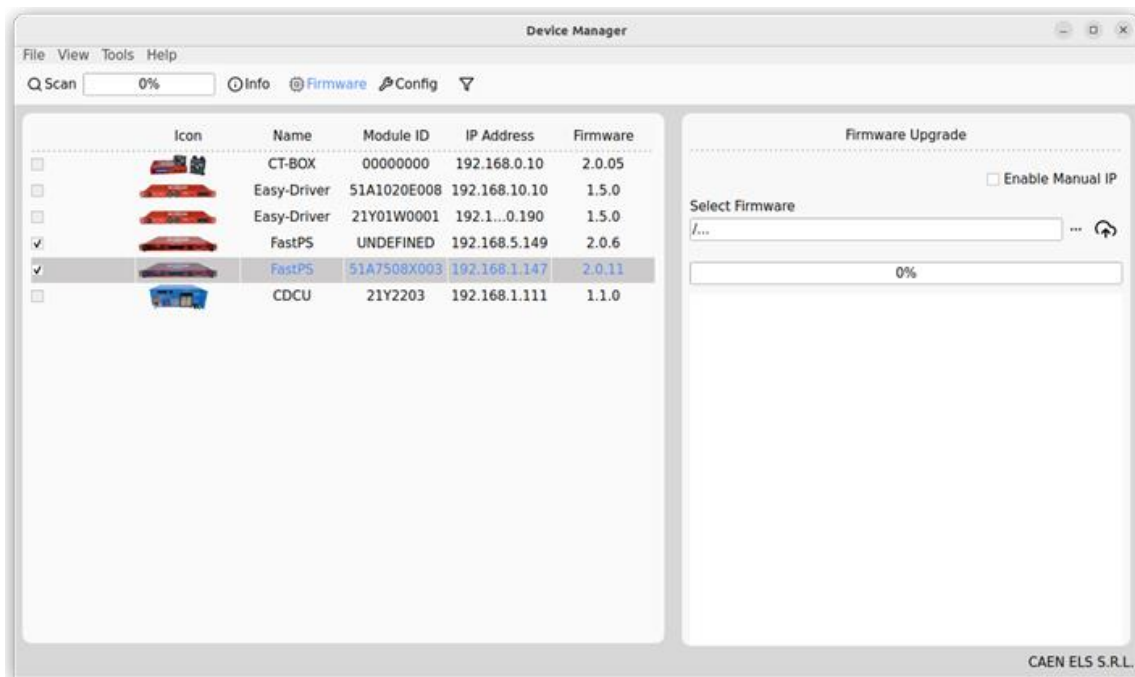
The *Firmware Page* is accessible from the upper bar; from this page it will be possible to select the firmware to load on the device.

This page displays an additional tab on the right. The  icon allows to select the Firmware file (*.hex*, *.flash*, *.updt*); later, the user can load the firmware by means of the  icon. The firmware loading progress will be visible through the progress bar and through the log. N.B.: CT-BOX devices cannot be updated by means of this procedure.

The detected devices remain visible in the table on the left.



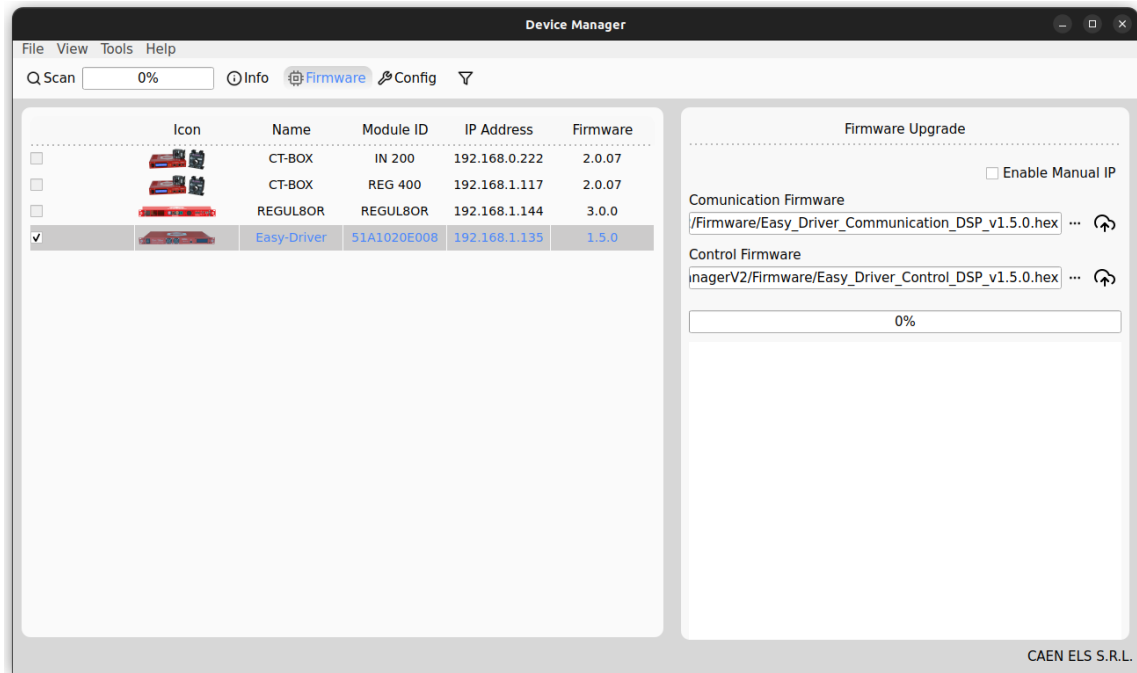
It is possible to update multiple devices simultaneously as long as they belong to the same family (e.g. all FAST-PS units connected on the same network).



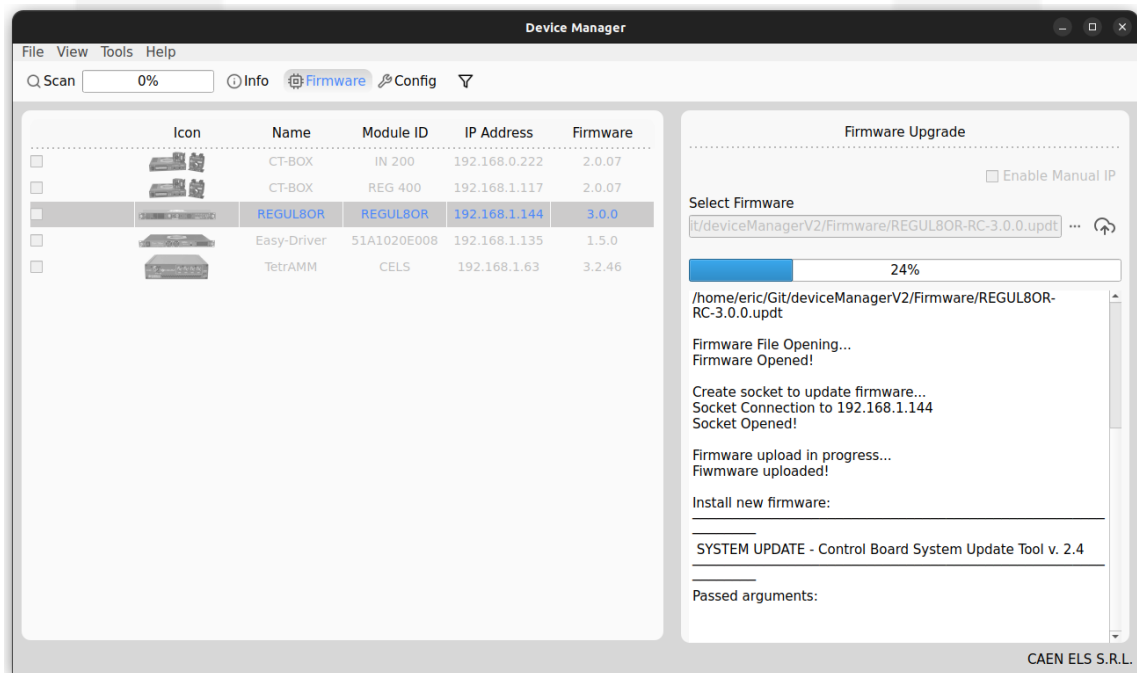


## CAENels Device Manager – Quick Start Guide

For the CAENels Easy Driver units, the load of the firmware is a two-step process, since it is necessary to load a first firmware handling the communication part and a further one dedicated to the control part. The two loading steps are independent each other and must be carried out separately and in series.



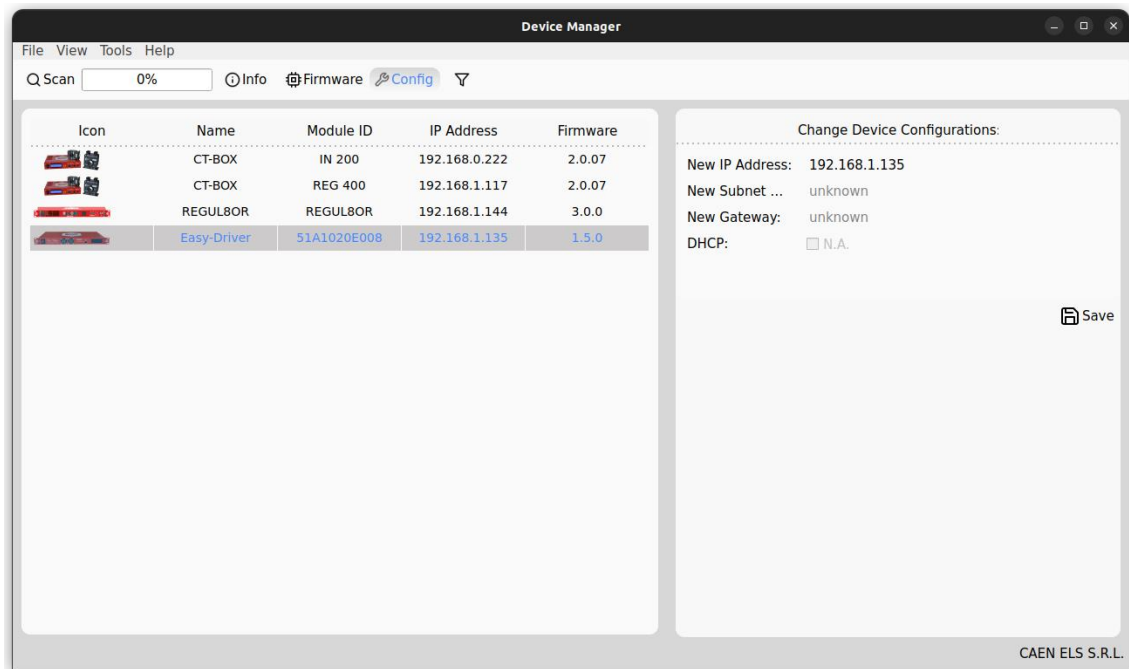
During the update, all the other features are hide and blocked.



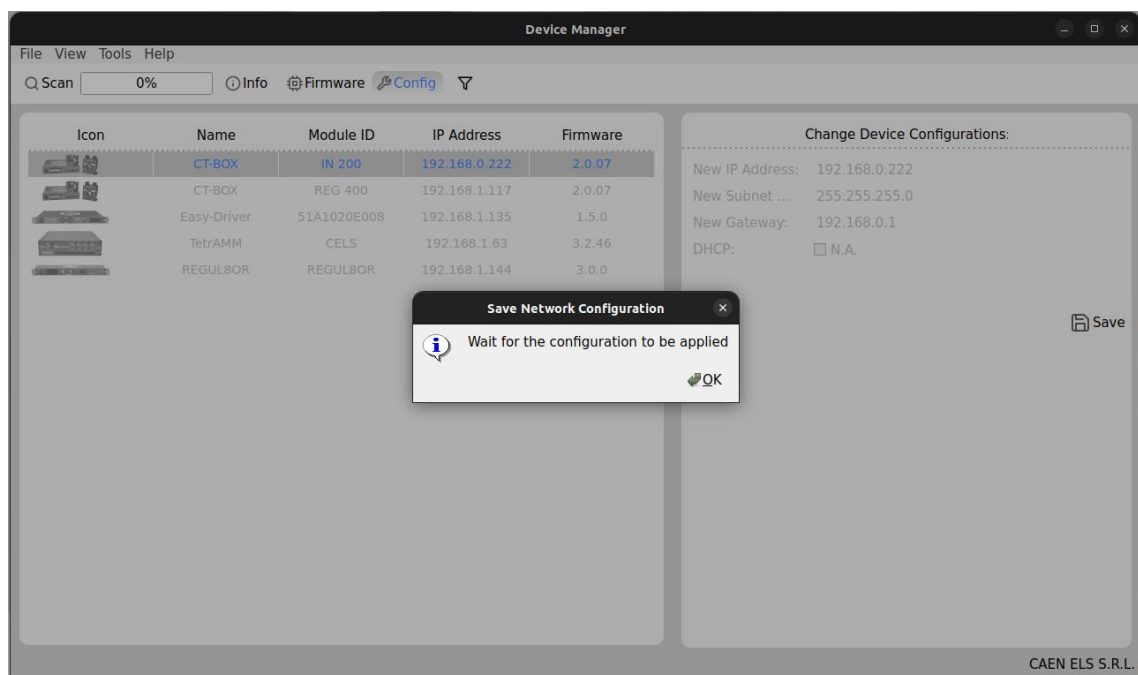
A message will notify the user when the update has been completed.

## 2.3 Config Page

When selected, the *Config Page* shows additional network configurations about the selected device on the right tab. By selecting the desired item, it will be possible to modify the network configurations of the single device. After having edited the desired parameters, press the saving key.

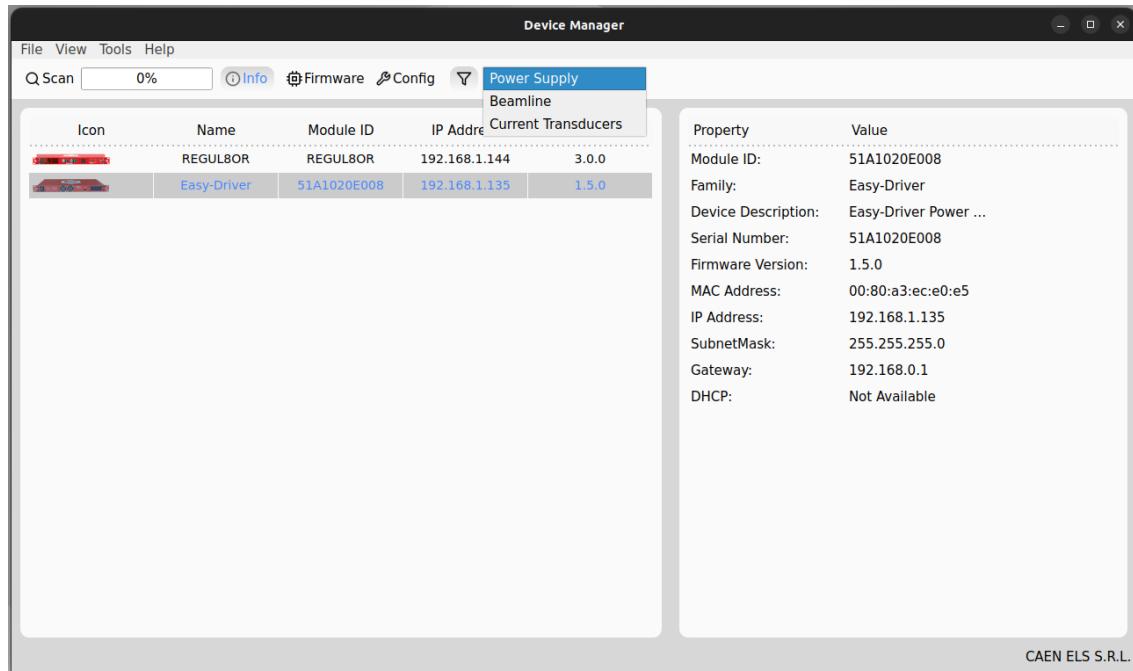


A message will inform the user that the information has/have been sent and it/they will be applied. Wait and scan again to verify that they have been applied correctly.



## 2.4 Filter

It is possible to filter the detected devices by family by clicking on the *Filter* button.

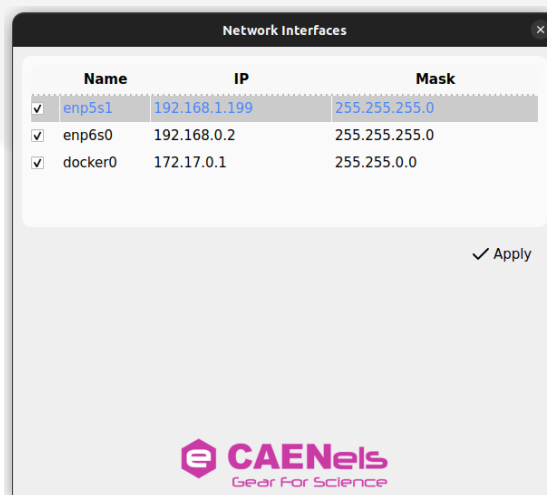


## 2.5 Tools

From the *Tools* item in the upper bar, the user has access to both the *Select Network Interfaces* and *Settings*.

### 2.5.1 Select Network Interfaces

It is possible to choose which network interfaces to send a broadcast message to detect the CAENels devices by selecting *Network Interface* from the *Tools* item from the upper bar.



## 2.5.2 Settings

From the *Settings* menu, it is possible to change the *Broadcast Time* (waiting time for the research of new devices in the network) and set the theme for the *Device Manager* among *Light* and *Dark*.

