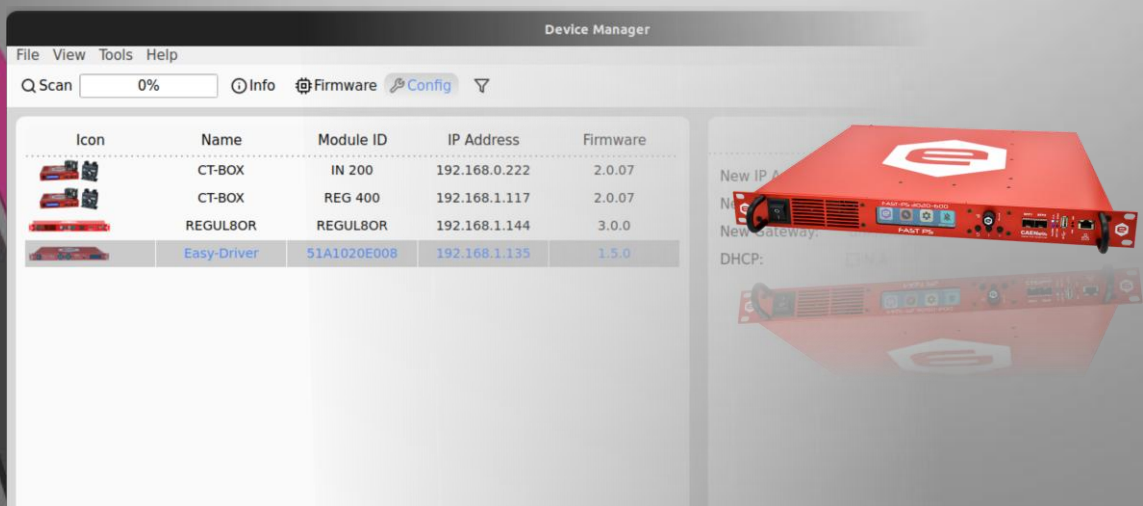


Device Manager



Quick Start Guide



All Rights Reserved
© CAEN ELS s.r.l.
Rev.2.1 –July 2025



CAEN ELS s.r.l.

Via Karl Ludwig Von Bruck 32– 34144 Trieste (TS)

Italy

Mail: info@caenels.com

Web: www.caenels.com

Disclaimer

No part of this Quick Start Guide may be reproduced in any form or by any means, electronic, mechanical, recording, or otherwise, without the prior written permission of CAEN ELS s.r.l.

It is strongly recommended to read thoroughly this Quick Start Guide before performing any kind of operation related to firmware upgrade on CAEN ELS devices.

CAEN ELS S.r.l. reserves the right to change partially or entirely the contents of this Manual at any time and without giving any notice.

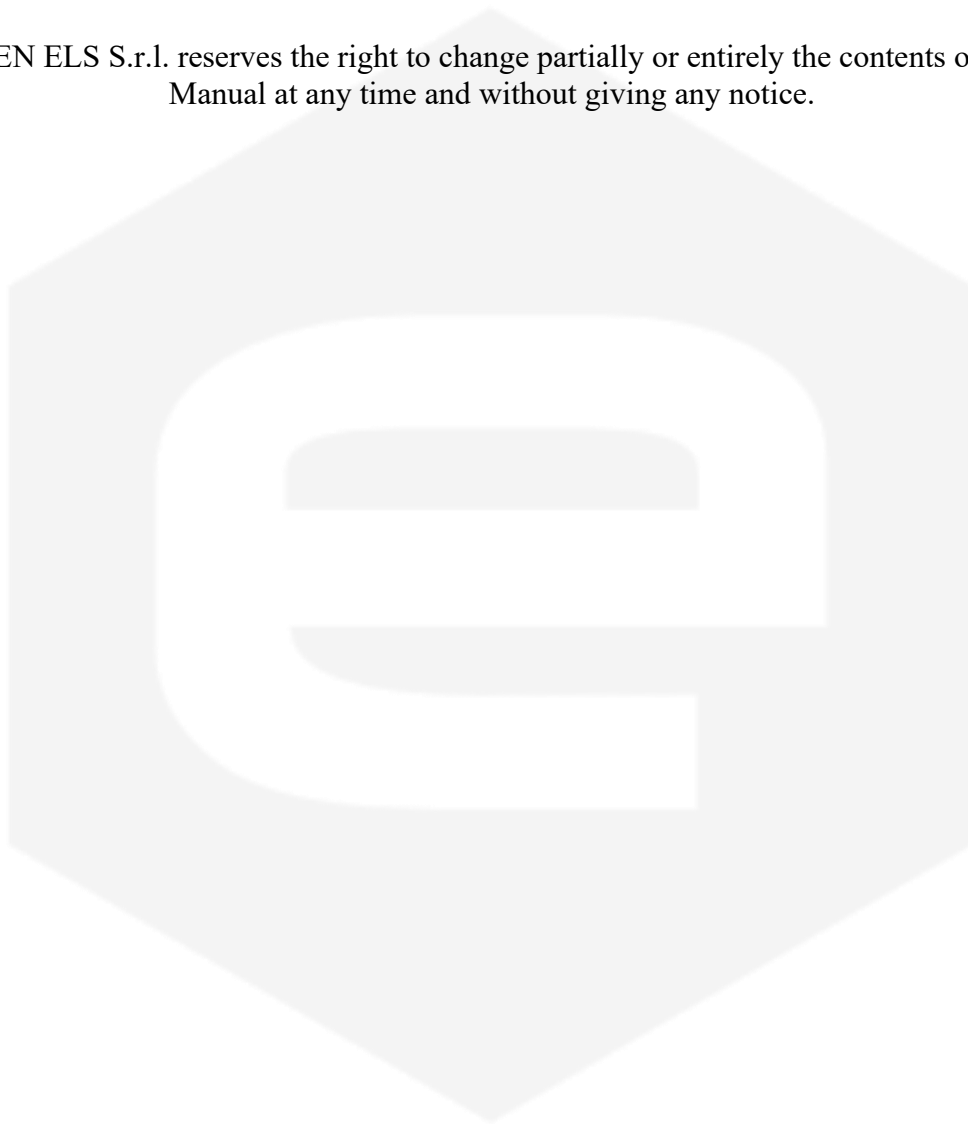


Table Of Contents

- 1. INTRODUCTION.....6
- 2. MAIN WINDOW8
- 3. UTILITIES9
 - 3.1 FIRMWARE UPGRADE.....9
 - 3.2 NETWORK SETTINGS10
 - 3.3 TOOLS.....11
 - 3.3.1 *Select Network Interfaces*11
 - 3.3.2 *Settings*.....11
 - 3.3.3 *Advanced Network Configuration*.....12

Document Revisions

Revision	Date	Comment
1.0	August 10 th , 2023	First Release
1.1	January 9 th , 2024	Text revision
1.2	February 5 th , 2024	Text revision, images updated. Added Advanced Network Configuration menu. Compatible with Device Manager 2.2.0
2	August 8 th 2024	Updated address and revision numbering
2.1	July 23 th 2025	Added BatReg ² family

1. Introduction

This document is the Quick Start Guide for the CAEN ELS Device Manager software. The Device Manager is capable of:

- discover CAEN ELS devices connected on the network;
- change the device network settings;
- update the device firmware.

Supported CAEN ELS devices are reported in Table 1.

Device Family	Supported Device Groups	Firmware File extension
Power Supply System	BatReg ²	.updt
	EASY-DRIVER	.hex
	FAST-Bi-1K5	.updt
	FAST-PS	.updt
	FAST-PS-M	.updt
	FAST-PS-1K5	.updt
	NGPS	.updt
	QDS	.flash
	REGUL8OR	.updt
Precision Current Measurements	CT-BOX	
Beamline Electronic Instrumentation	TetrAMM	.flash
	PreDAC	.flash
	EnBOX	.flash

Table 1: List of currently supported devices.

The Device Manager can be used to upgrade the firmware of all the supported device groups, except for the CT-BOX.

The Device Manager can be downloaded from the CAEN ELS website (www.caenels.com), from the Software/Firmware page of each supported device, as reported in Figure 1.

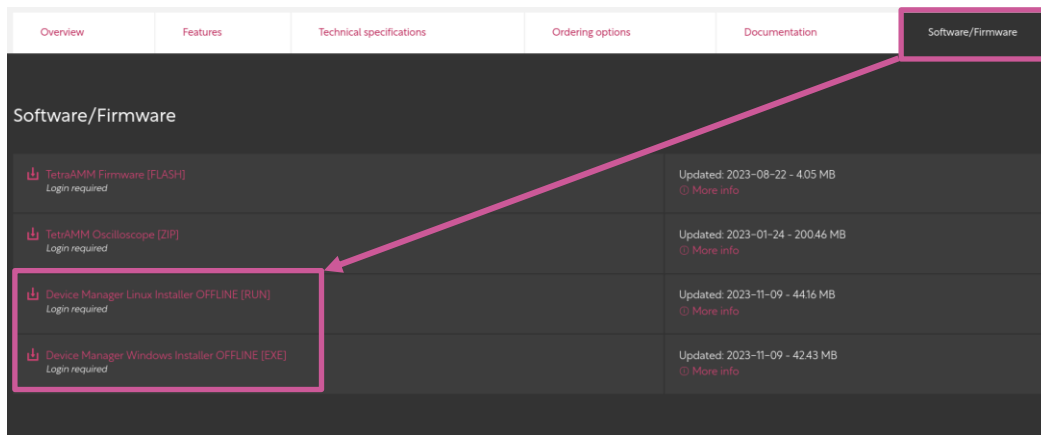



Figure 1: Device Manager download location.

The Device Manager is provided as a Linux or Windows Offline installers.

2. Main Window

The Main Window (Figure 2) of the Device Manager is organized as follows:

1. *Scan bar*: this bar allows to discover CAEN ELS devices on the network (*Scan* button), select the information visualized on the secondary frame (*Info*, *Firmware* and *Config* buttons), and filter the discovered CAEN ELS devices (*Filter* button .
2. *Primary frame*: shows the list of the detected CAEN ELS devices with their basic information. *Group* column is important when upgrading multiple devices (more information in section 3.1).
3. *Secondary frame*: shows additional information depending on the selected button from the scan bar. If *Info* is selected (left picture in Figure 3) general information about the device are shown. If *Firmware* is selected (central picture in Figure 3) a new firmware can be uploaded to one or more devices. If *Config* is selected (right picture in Figure 3) device network settings can be configured.

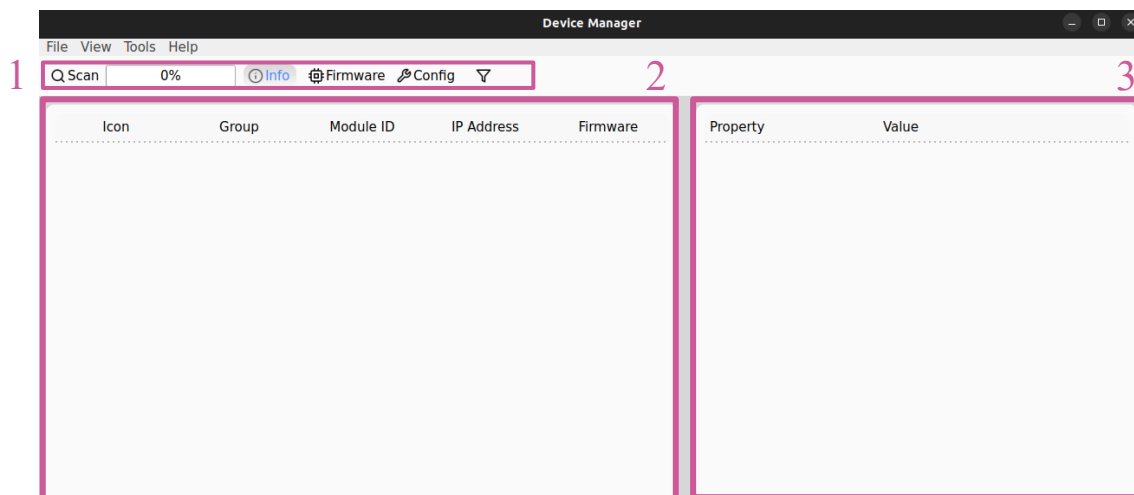


Figure 2: Main window at startup.

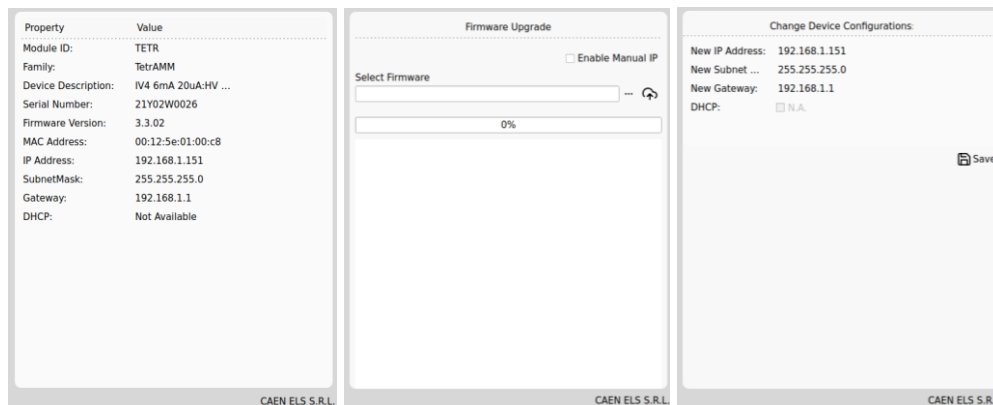


Figure 3: *Info* page (left picture), *Firmware* page (central picture) and *Config* page (right picture).

3. Utilities

3.1 Firmware Upgrade

To update a device with a specific firmware, select *Firmware* from the *Scan bar*.

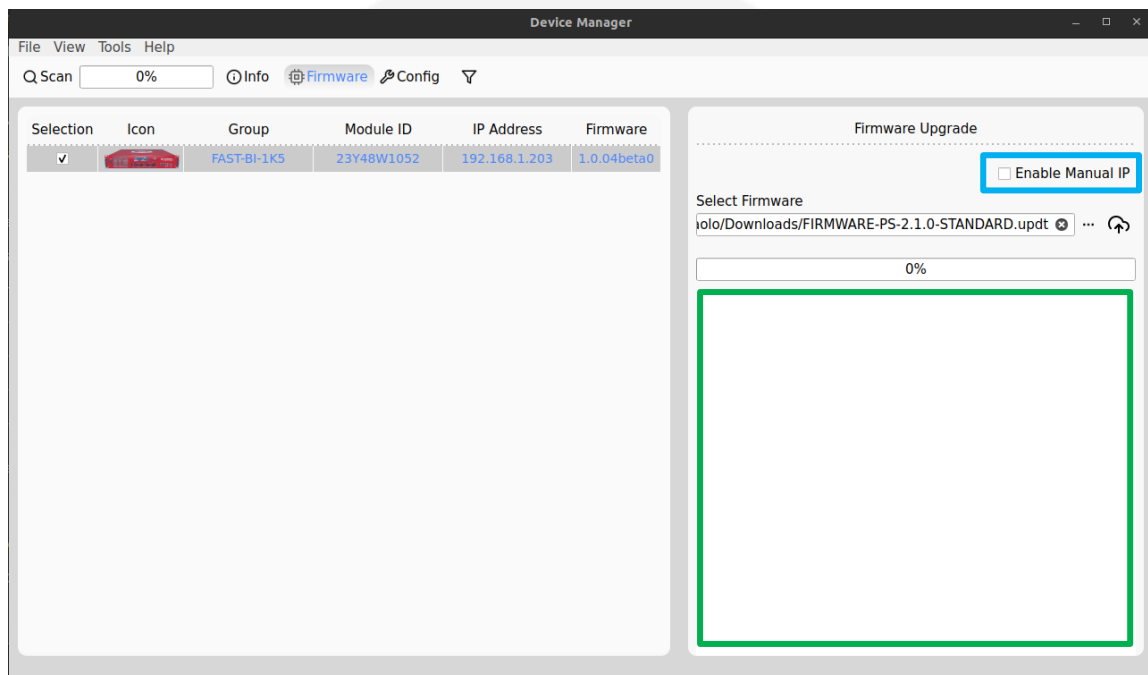


Figure 4: Firmware page.

Firstly, select the device or devices by checking the corresponding frame boxes in the first column of the primary frame.

Only devices belonging to the same *Group* can be selected for multiple updates.

Select the firmware file by using the ... icon. When the firmware file is selected, the upgrade procedure can be started by means of the ↻ icon. The firmware loading progress can be followed by the progress bar. When the firmware update is completed, a pop-up window appears as shown in Figure 5.

All CAEN ELS devices are automatically rebooted after the upgrade except for QDS, TetrAMM, PreDAC and EnBOX which have to be rebooted manually by performing a power-cycle.

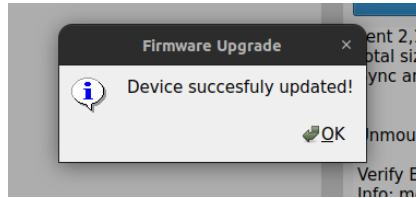


Figure 5: Firmware upgrade completed pop-up.

The firmware upgrade *Terminal Log* (green box in Figure 4) and the *Enable Manual IP* checkbox (blue box in Figure 4) are reserved for debug purpose only.

3.2 Network Settings

When selected, the *Config Page* (see Figure 6) shows additional network configurations about the selected device. By selecting a device, it will be possible to modify its network configurations. After having edited the desired parameters, press the saving key.

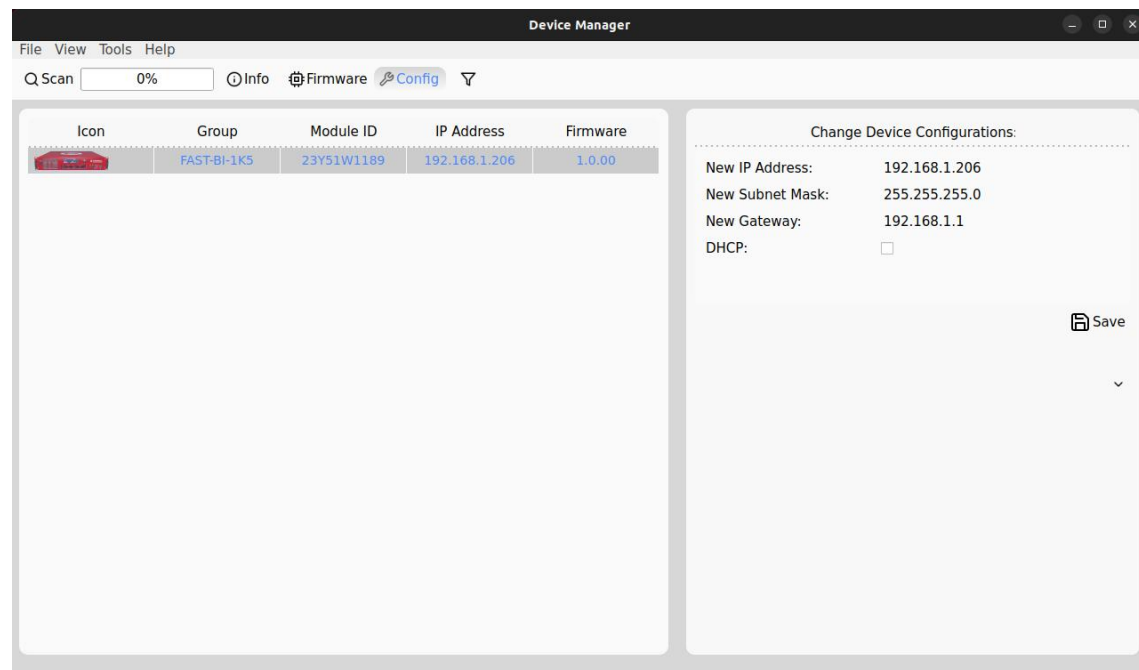


Figure 6: Network settings.

A pop-up message (see Figure 7) will inform the user that the new settings have been applied. After few seconds verify that the new settings have been applied by performing a new *Scan*.

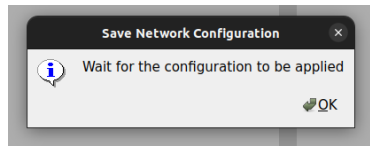


Figure 7: Network configuration pop-up.

3.3 Tools

From the *Tools* item in the upper bar, the user has access to:

1. *Select Network Interfaces*;
2. *Settings*;
3. *Advanced Network Configuration*.

3.3.1 Select Network Interfaces

It is possible to choose which network interfaces to send a broadcast message to detect the CAEN ELS devices by selecting *Network Interface* from the *Tools* item from the upper bar.

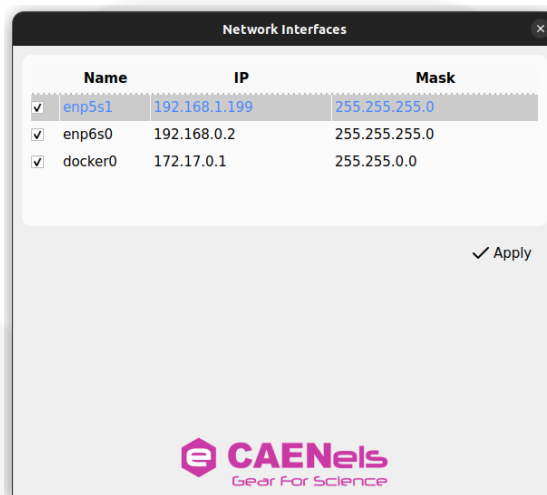


Figure 8: Network interfaces.

3.3.2 Settings

From the *Settings* menu, it is possible to change the *Broadcast Time* (waiting time for the research of new devices in the network) and set the theme for the *Device Manager* among *Light* and *Dark*.

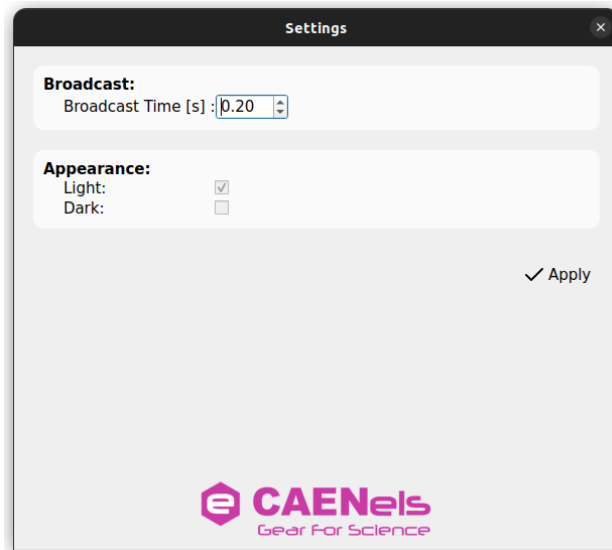


Figure 9: Settings menu.

3.3.3 Advanced Network Configuration

From the *Advanced Network Configuration* menu (Figure 10), it is possible to change the network settings simultaneously to all the detected devices. From this menu it is possible to change *IP Address*, *Subnet Mask* and *Gateway*. The new network settings are applied by pressing the *Apply* button.

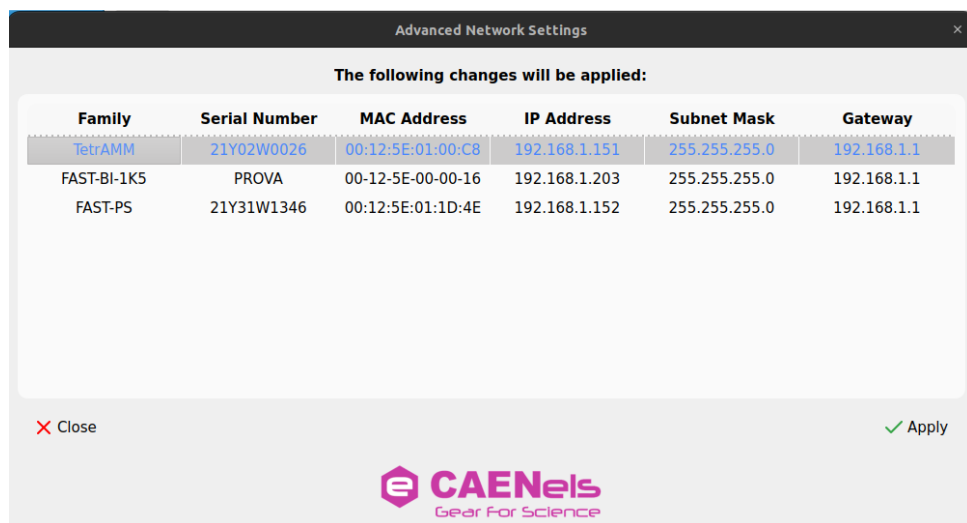


Figure 10: Advanced Network Configuration menu.