

TetrAMM



TetrAMM Oscilloscope Quick Start Guide



BEAMLINe ELECTRONIC INSTRUMENTATION

All Rights Reserved
© CAEN ELS S.r.l.
Rev.2– August 2024



CAEN ELS s.r.l.

Via Karl Ludwig Von Bruck 32– 34144 Trieste (TS)
Italy

Mail: info@caenels.com

Web: www.caenels.com

Table of Contents

1. INTRODUCTION.....	6
2. OSCILLOSCOPE OVERVIEW	7
2.1 CONNECTING TO THE TETRAMM	8
2.2 ACQUISITION OPTIONS	9
2.3 HIGH-VOLTAGE MODULE OPTIONS	10
2.4 STATISTICS FRAME	11
2.5 INTERLOCK CONTROL	12
2.6 MEASUREMENT STORAGE FRAME	13
2.6.1 Example of Saved Data Points	14
2.6.2 Example of Saved Statistics	14
2.7 OSCILLOSCOPE CONFIGURATION FRAME	15
3. BPM CONFIGURATION	16
3.1 BEAM POSITION COMPUTATION	18
3.1.1 90° BPM Geometry	19
3.1.2 45° BPM Geometry	19
4. FREQUENCY ANALYSIS - FFT	20
5. CONFIGURATION.....	21

Table of Figures

Figure 1: TetrAMM Oscilloscope main window	7
Figure 2: Communication configuration frame	8
Figure 3: Pop-up window for failed connection	8
Figure 4: TetrAMM acquisition options	9
Figure 5: TetrAMM High-Voltage module options.....	10
Figure 6: Statistics for BPM calculation	11
Figure 7: Statistics for currents	11
Figure 8: Interlock control frame	12
Figure 9: Measurement storage frame	13
Figure 10: Data storage steps	13
Figure 11: Oscilloscope configuration frame	15
Figure 12: BPM tab.....	16
Figure 13: BPM channel selector	18
Figure 14: Wrong BPM configuration	18
Figure 15: FFT tab	20
Figure 16: Configuration tab.....	21

Document Revision

Revision	Date	Comment
1.0	February 20 th , 2015	First release
1.1	July 15 th , 2016	BPM formula word misspellings correction
1.2	November 16 th 2016	Document update
2	August 8 th 2024	Updated address and revision numbering



1. Introduction

This Quick Start guide describes the basic functionality of the TetrAMM oscilloscope software. The main purpose of this document is to introduce users to user interface, presenting the steps needed to operate the TetrAMM device and to explain some more advanced features.

The users are strongly encouraged to read the TetrAMM User's Manual since it explains some features of device in more detail.

2. Oscilloscope Overview

The **Figure 1** marks different configuration modules. The following chapter explains each one of the sections in detailed way.

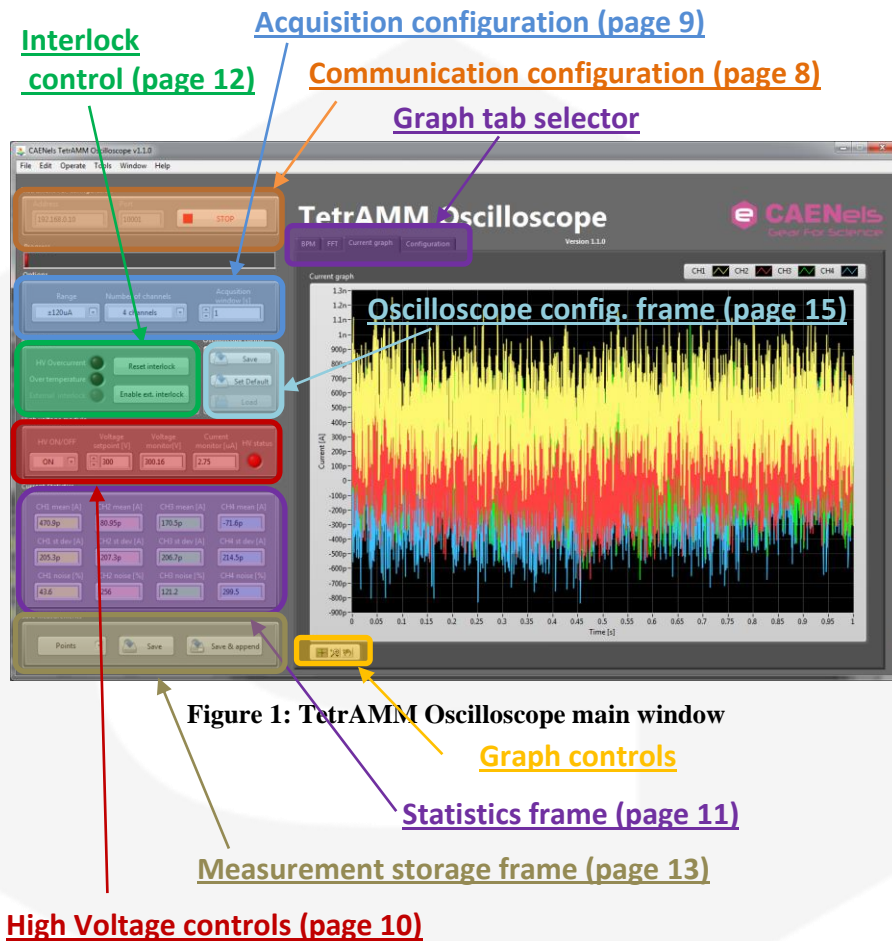


Figure 1: TetrAMM Oscilloscope main window

2.1 Connecting to the TetrAMM

On **Figure 2** communication configuration frame is shown.

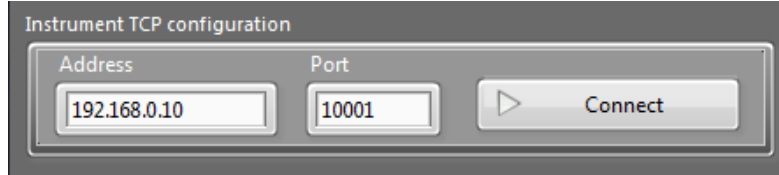


Figure 2: Communication configuration frame

The first step before connecting to the TetrAMM is to **set the IP address and TCP port**. The default factory values for TetrAMM are 192.168.0.10 and 10001. The IP and TCP settings can be changed using the *CAENels Device Manager* software, available at www.caenels.com.

Once the correct values are entered into the Address and Port fields, by **pressing the Connect button** makes Oscilloscope to establish connection with the device and it will start the acquisition loop. During the acquisition loop the Oscilloscope reads the device and the HV module status, updates configuration if needed, captures data from the picoammeter and shows it on a graph. It continues performing this loop until the **Stop button is pressed**.

In the case that the TetrAMM device does not respond (because the address or port is not correctly set or the device is, for example, turned off) the window on **Figure 3** will pop-up.

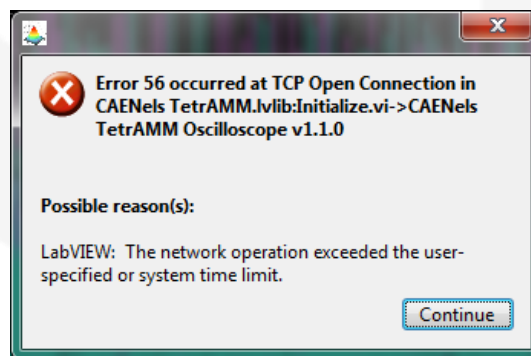


Figure 3: Pop-up window for failed connection

In this case we suggest:

- Check if the TetrAMM is powered on;
- Check if the Ethernet cable is connected (verify that the “*Link LED*” on the RJ45 connector is turned on);
- Check IP and TCP settings using *CAENels Device Manager*.

2.2 Acquisition Options

On **Figure 4** the configuration for acquisition are shown. User can **select input range, number of channels and the size of acquisition window**.

At start-up the TetrAMM sets all channels to the highest measuring range in order to protect the analog front-end from unwanted large currents. User can change this setting by selecting the desired or appropriate range from the drop-down menu (see the *TetrAMM User's Manual* for a full description of auto-ranging functionality).

The acquisition window determines the length of the captured buffer which is shown on the graphs and on which the statistics are calculated. When the averaging is disabled (see Chapter 5 on page 21) this value is limited to maximum of 4 s.

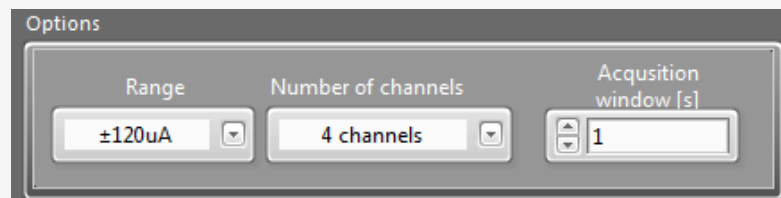


Figure 4: TetrAMM acquisition options

2.3 High-Voltage Module Options

Configuration parameters for the High-Voltage module are shown on **Figure 5**. The user can **enable and disable the HV module and set the desired voltage**. The voltage and current read-back values are also shown. The HV Status LED indicates if the module is turned on or not.

At start-up the TetrAMM device disables the High-Voltage module output for safety reasons.

The voltage setpoint value is limited by the HV module model installed in TetrAMM (different voltage ratings).

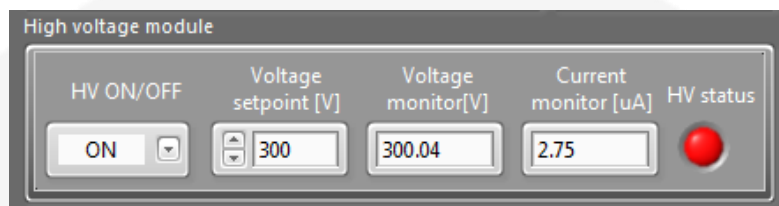


Figure 5: TetrAMM High-Voltage module options

2.4 Statistics frame

On **Figure 6** and **Figure 7** the statistics computed for data on each channel are shown.

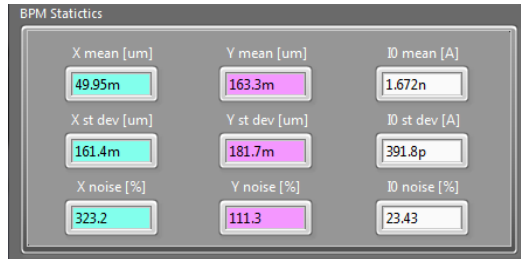


Figure 6: Statistics for BPM calculation

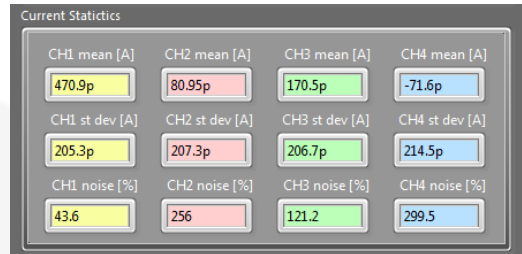


Figure 7: Statistics for currents

The Statistics frame exists in two different variations, depending on the Graph tab selection. When the Graph tab is set to **BPM**, the statistics are calculated on horizontal X and vertical Y position and on the beam intensity I0. The Scaling parameters (see Chapter 3 on page 16) are also taken into account in the computation.

When the Graph tab is set to **Current** Graph the statistics are computed on the measured currents on each of the four channels.

The noise value is calculated as the ratio of standard deviation σ to mean μ of a signal.

$$NSR [\%] = \frac{\sigma}{\mu} * 100 \%$$

2.5 Interlock Control

The interlock control frame is shown on **Figure 8** in a situation where the external interlock (connector at the back of the TetrAMM) is enabled and the interlock signal is activated.

The TetrAMM has three (3) sources of interlock which can **turn off the High-Voltage module**:

- Over-current on the High Voltage module;
- Over-temperature in TetrAMM box;
- External interlock.

The external **interlock can be enabled or disabled** by pressing the “Enable ext. interlock” button. When the external interlock gets activated, it can be **cleared** by clicking on “Reset interlock” button. The HV module can be re-enabled only after interlock has been cleared.

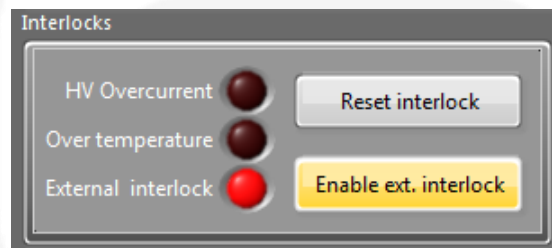


Figure 8: Interlock control frame

2.6 Measurement Storage Frame

The TetrAMM Oscilloscope includes the functionality to store measured data points or the statistics of the measured data. On **Figure 9** the frame which controls the storage sub-program is shown.



Figure 9: Measurement storage frame

To store the measured data the user should **select the desired format** (either *data points* or *statistics*). The sequence performed after **pressing the “Save” button** is shown on Figure 10. First, a pop-up asking for the file destination will show up.

Then the current data (the ones shown on graphs) will be saved. Lastly, a graphs will be refreshed with new data.

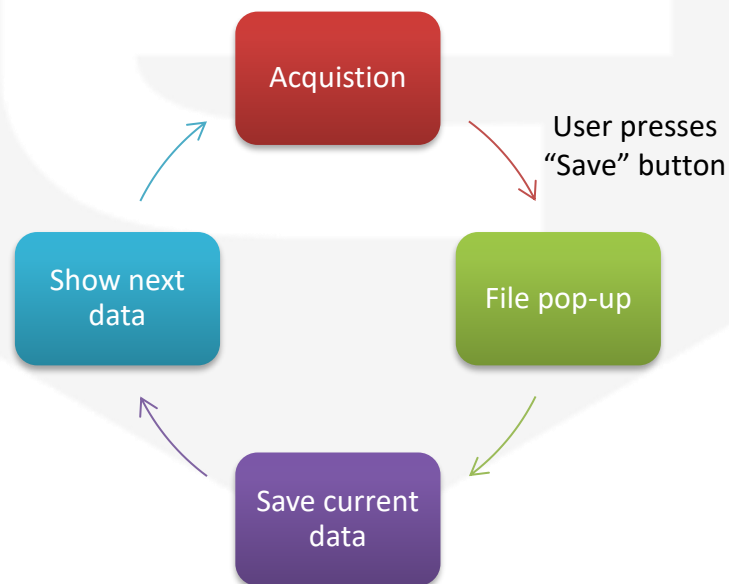


Figure 10: Data storage steps

The “Save & Append” procedure performs similar operation. Once it is pressed it latches in enabled position and continues to store data until it is pressed again. The user is asked to define or locate the file name for the first time while all following measurements are appended to the same file.

2.6.1 Example of Saved Data Points

```

LabVIEW Measurement
Writer_Version 2
Reader_Version 2
Separator      Tab
Decimal_Separator .
Multi_Headings No
X_Columns      One
Time_Pref      Relative
Operator       Jan
Date           2015/02/18
Time           14:41:27.7471370697021484375
***End_of_Header***

Channels       4
Samples 10000 10000 10000 10000
Date 2015/02/18 2015/02/18 2015/02/18 2015/02/18
Time 14:41:27.7471370697021484375 14:41:27.7471370697021484375
    14:41:27.7471370697021484375 14:41:27.7471370697021484375
X_Dimension    Time    Time    Time    Time
X0             0.0000000000000000E+0 0.0000000000000000E+0 0.0000000000000000E+0
    0.0000000000000000E+0
Delta_X 0.000100 0.000100 0.000100 0.000100
***End_of_Header***
X_Value CH1      CH2      CH3      CH4      Comment
0.000000 3.509047E-12 3.902240E-12 3.094912E-12 -3.871873E-13
0.000100 4.796508E-12 3.303214E-12 2.102495E-12 -4.959658E-13
0.000200 7.089796E-12 3.559514E-12 8.910301E-13 8.615300E-13
0.000300 3.051582E-12 2.246721E-12 -1.746475E-12 7.795736E-13
0.000400 2.695444E-12 3.863497E-12 -1.016319E-12 1.871829E-12
0.000500 4.045489E-12 1.623853E-12 1.415551E-12 1.840536E-12
0.000600 5.611601E-12 3.581865E-12 2.545059E-12 4.234359E-13
0.000700 5.730810E-12 3.188475E-12 1.199484E-12 1.037364E-12

```

2.6.2 Example of Saved Statistics

```

-----
TetrAMM measurement statistics
Date: 2/18/2015
Time: 2:42:11 PM
-----
CH1:
mean: 4.408513E-13    st dev: 3.234769E-12    noise:7.337552E+2
CH2:
mean: 4.279575E-13    st dev: 2.224902E-12    noise:5.198885E+2
CH3:
mean: 5.176757E-13    st dev: 1.861195E-12    noise:3.595291E+2
CH4:
mean: 5.963117E-14    st dev: 1.936945E-12    noise:3.248210E+3

```

2.7 Oscilloscope Configuration Frame

The TetrAMM oscilloscope offers a possibility to store the actual Oscilloscope configuration that can be recalled at a later time. The saved parameters/settings are:

- *Connection* settings;
- *Picoammeter* configuration;
- *Acquisition* configuration;
- *BPM configuration* and *scaling* parameters.

The frame which enables saving and loading settings/paramters is shown in **Figure 11**.

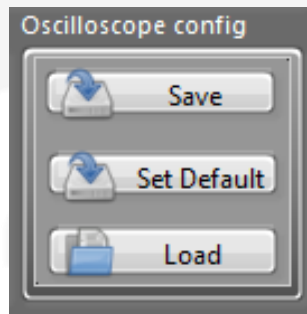


Figure 11: Oscilloscope configuration frame

The **Save** button opens a file selection pop-up which enables the user to select the file in which to save the current Oscilloscope configuration.

The **Load** button enables user to load some previously saved configuration.

The **Set Default** button enables user to save the current settings as a default settings which are loaded at the start-up. Since the default settings file is saved in "Program Files" folder the Oscilloscope should be started with "*Run as administrator*" command in order to perform this task.

3. BPM Configuration

The TetrAMM Oscilloscope embeds a dedicated tab for quadrature phBPM application.

The TetrAMM Oscilloscope can perform computations of the **beam position** as the difference over sum for configured channels, an **intensity I0** is calculated as a sum of all four input currents.

The user can set the **BPM detector orientation** (either 90° or 45°) and also the scaling factors for a specific installed detector topology.

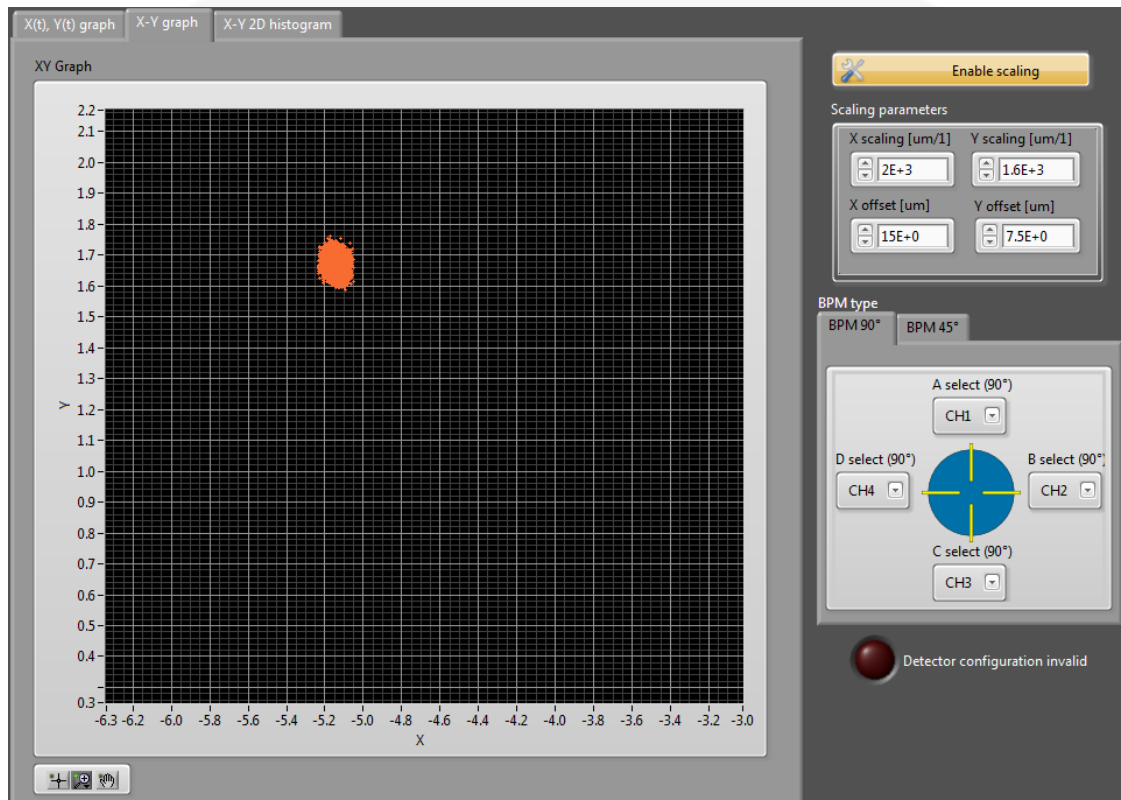


Figure 12: BPM tab

By pressing the “**Enable scaling**” button the user can select between normalized beam position (from -1 to 1) and scaled position (in μm). When “Enable scaling” is selected, the “Scaling parameters” box is shown and it contains the parameters used to calculate the beam position (see following chapter for equations on how the beam position is calculated).

The “**BPM type**” tab enables user to select the appropriate BPM geometry by selecting the desired sub-tab.

The four selectors enable user to virtually connect input channels to particular geometric positions of the detecting system.

The “**Detector configuration invalid**” LED signals a non-correct configuration (e.g. if the same input channel is indicated on two or more different electrodes).



3.1 Beam Position Computation

In order to perform calculations of the beam position, the input currents to picoammeter should be associated to appropriate blades, photodiodes or electrodes. This association can be done in the frame with four drop-down menus shown on **Figure 13**.

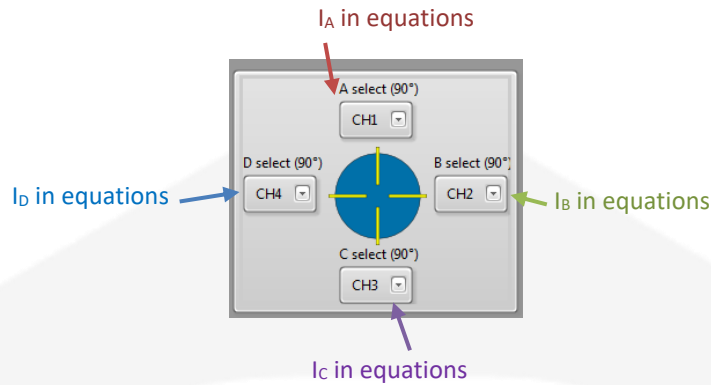


Figure 13: BPM channel selector

The situation when one input channel is assigned to two blades is shown on Figure 14 and it causes an invalid configuration; the “Detector configuration invalid” LED is lit up in red.

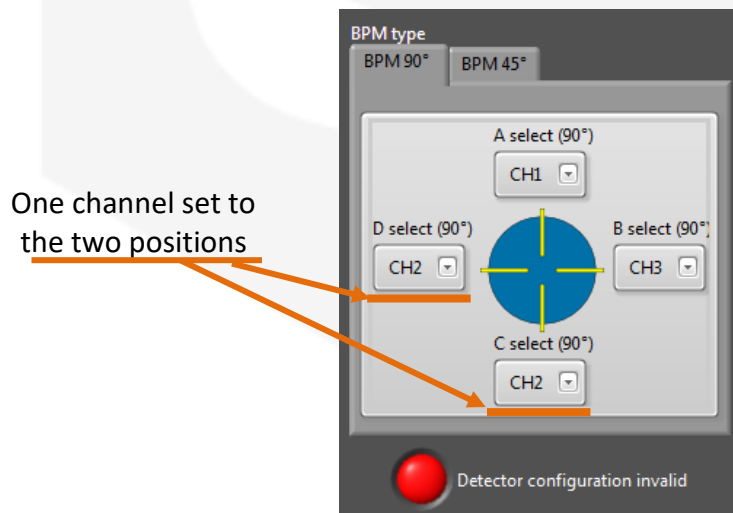


Figure 14: Wrong BPM configuration

3.1.1 90° BPM Geometry

When the “BPM type” is set to BPM 90° the beam is calculated using the following formulas:

$$X = K_X * \frac{I_B - I_D}{I_B + I_D} + offset_X$$

$$Y = K_Y * \frac{I_A - I_C}{I_A + I_C} + offset_Y$$

$$I_0 = I_A + I_B + I_C + I_D$$

where I_A , I_B , I_C and I_D are the current measured on channel A, B, C and D respectively.

3.1.2 45° BPM Geometry

When the “BPM type” is set to BPM 45° the beam is calculated using the following formulas:

$$X = K_X * \frac{I_B + I_C - (I_A + I_D)}{I_A + I_B + I_C + I_D} + offset_X$$

$$Y = K_Y * \frac{I_A + I_B - (I_C + I_D)}{I_A + I_B + I_C + I_D} + offset_Y$$

$$I_0 = I_A + I_B + I_C + I_D$$

where I_A , I_B , I_C and I_D are the current measured on channel A, B, C and D respectively.

4. Frequency Analysis - FFT

The TetrAMM Oscilloscope supports calculation of the frequency spectra on input data. The Fast Fourier Transform (FFT) algorithm can be performed either on input currents or on configured and calculated beam position or beam intensity. The scaling factors are also taken into account into these computations. The **Figure 15** shows an example of FFT calculation with the TetrAMM Oscilloscope (on vertical position Y).

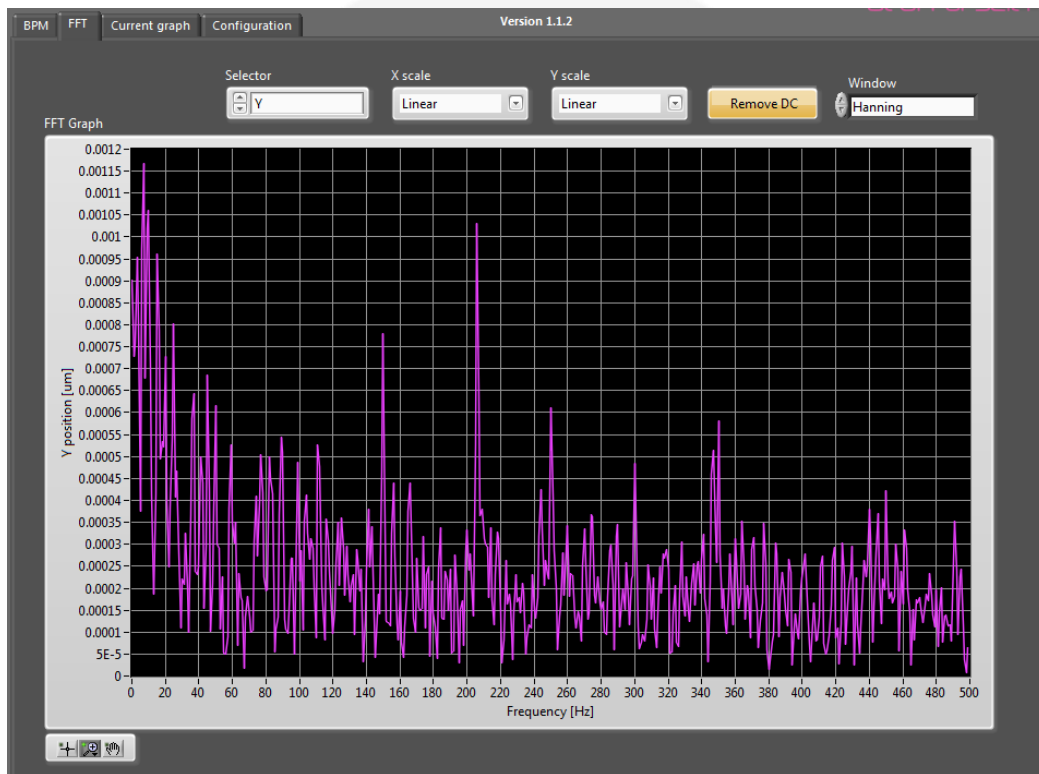


Figure 15: FFT tab

The user can select the signal on which the calculation should be performed by the drop-down menu Selector. Available choices are Ch1, Ch2, Ch3, Ch4, X position, Y position and I0 Intensity.

The X and Y axis can be set to be either in linear scale or in logarithmic scale using X scale and Y scale drop-down menus.

In some cases the DC component – i.e. FFT amplitude at frequency 0 – is not required; the user can suppress the DC component by enabling Remove DC button.

Because of finite length of the signal on which the FFT is calculated there are some artifacts which may happen in the frequency space (e.g. spectral leakage). User can chose different windowing functions from Window drop down menu to obtain the desired result.

5. Configuration

The Configuration tab is dedicated to a more advanced configuration of TetrAMM device. This tab is shown on **Figure 16**.

This configuration allows user to **select between two different acquisition modes** (the “fast” acquisition at 100 kHz and the “slow” acquisition with data averaging). The period on which averaging is performed can also be changed.

Each TetrAMM input channel has user-configurable gain and offset. These parameters can be used to perform an additional (and application-specific) calibration.

The TetrAMM Oscilloscope allows user to **enable or disable parameters of this calibration**; these parameters can be **read from the device, written to the device** and offsets can be also **measured** directly from the input signals.

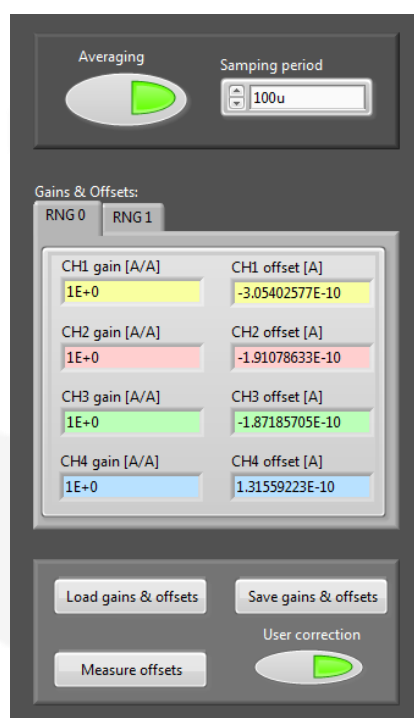


Figure 16: Configuration tab

The **Averaging** button selects between two acquisition modes that the TetrAMM is supporting. When it is disabled, TetrAMM uses its internal buffer to store data at the maximum sampling rate. The acquisition window in this case is limited to 4 seconds (see FASTNAQ Command in the *TetrAMM User's Manual* for detailed description). When the **Averaging** button is enabled, TetrAMM performs the averaging of input samples for the given period of time, therefore reducing input noise.

The Gains & Offset tab selector allows user to see all parameters stored in TetrAMM (there is a total of 16 parameters). At start-up, the TetrAMM Oscilloscope reads these values directly from the TetrAMM device; these are used to perform the calculations on TetrAMM current values.

Load gains & offsets button allows reading the parameters stored on TetrAMM; the gain and offsets fields gets updated with values currently stored on TetrAMM.

Save gains & offsets button allows writing the parameters from gains and offsets fields to TetrAMM; the new values take effect immediately.

Measure offsets button performs a 1-second long measurement of input currents in order to update the offset fields measured mean values of the input currents (i.e. the measured value changed by sign). These values are only stored locally on the TetrAMM Oscilloscope software and do not affect the calculations. In order to update the values on the device, the user should press Save gains & offsets button.

User correction button enables or disables the use of user-defined parameters in calculations.

When the user correction is disabled, the currents are calculated as:

$$I_{READ} = I_{raw}$$

When the user correction is enabled, the currents are calculated as:

$$I_{READ} = Gain_{UD} \cdot I_{raw} + Offset_{UD}$$

where:

- I_{READ} is the user-calibrated current read from the single channel [A];
- $Gain_{UD}$ is the user-defined gain factor [A/A];
- I_{raw} is the raw current read of the device [A];
- $Offset_{UD}$ is the user-defined offset value [A].